

PRESERVATION ALLIANCE

for greater philadelphia

Philadelphia Historic
Preservation Corporation
1979

Preservation Coalition
of Greater Philadelphia
1982

**The Preservation Alliance for
Greater Philadelphia
1996**

The mission of the Preservation Alliance is to actively promote the appreciation, protection, and appropriate use and development of the Philadelphia region's historic buildings, communities and landscapes.

Monitor and Assist the Philadelphia Historical Commission





Philadelphia Register of Historic Places

Façade Easement Program





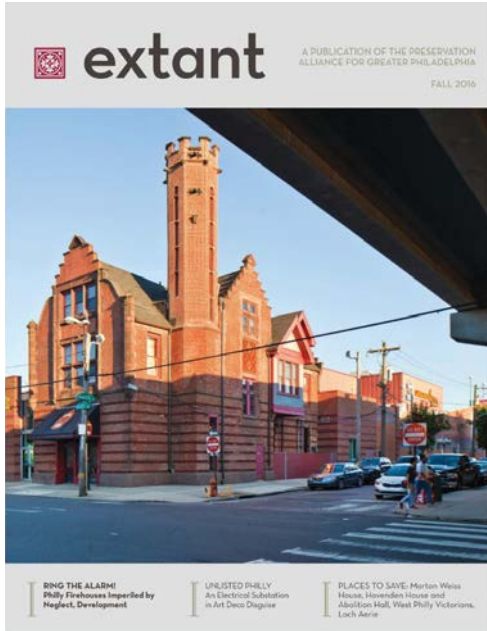
"Places to Save"

Clockwise from top left

- Lipkin Furniture, Coatesville, PA
- Tabor Chapel/ First Colored Wesley Church
- Strickland Row
- Broad-Erie-Germantown Nexus



Extant Magazine / Hidden City Philadelphia



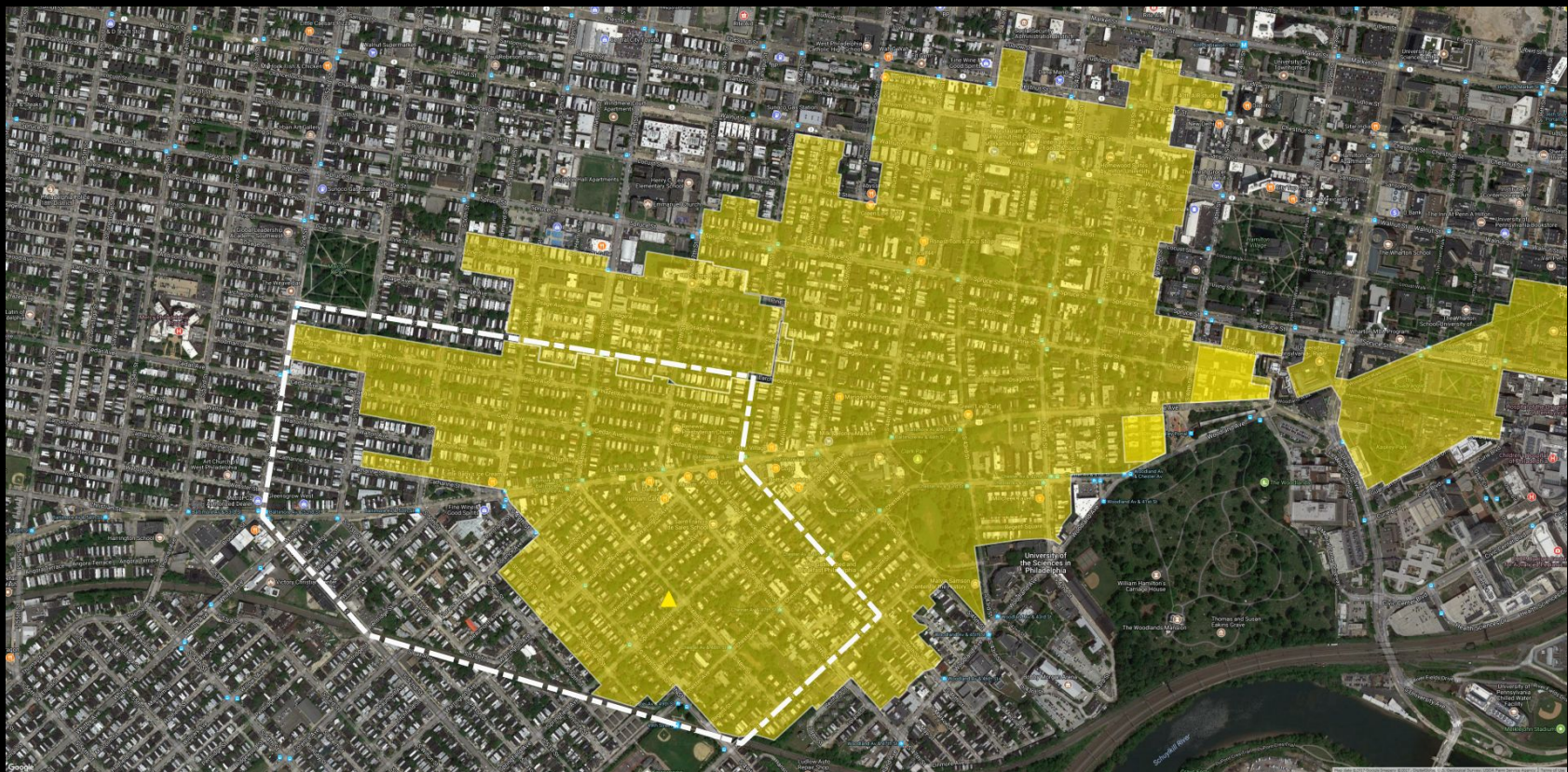
Architecture Walking Tours





Preservation Achievement Awards





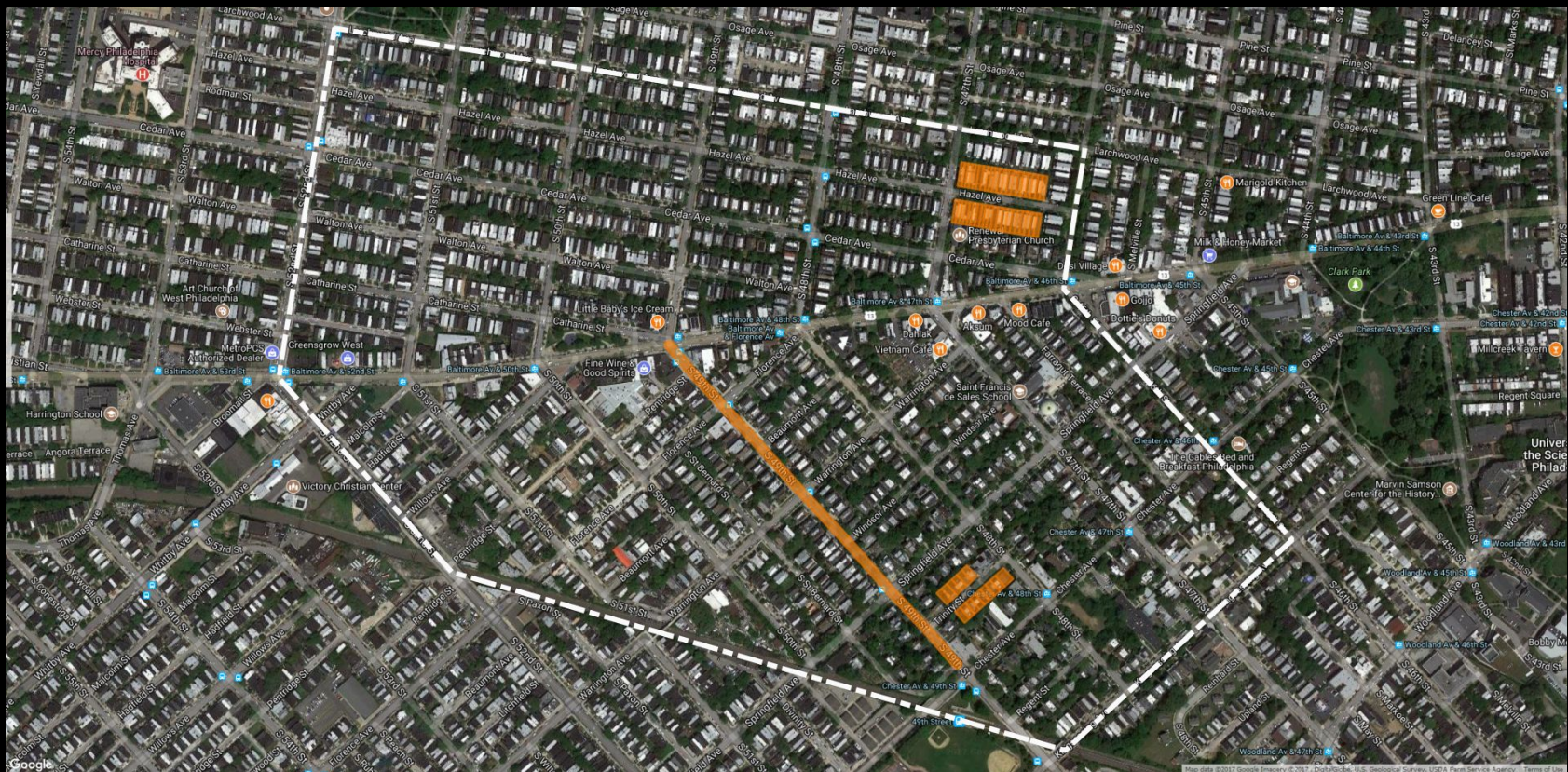
Cedar Park Neighbors

National Register Listings, 2017



Hanson Haines Residence
4801 Springfield Ave

NR



Cedar Park Neighbors

Locally Designated Properties, 2017



4600 block of Hazel Ave



4800 block, Trinity St & 1012 S 48th St



49th Street Historic Street Paving

**Philadelphia
Code**
Section
14-2007 (5)

Criteria for Designation of an Individual Building, Site or Object

A building, complex of buildings, structure, site, or object may be designated for preservation if it:

- A. Has significant character, interest or value as part of the development, heritage or cultural characteristics of the City, Commonwealth or Nation or is associated with the life of a person significant in the past; or
- B. Is associated with an event of importance to the history of the City, Commonwealth or Nation; or
- C. Reflects the environment in an era characterized by a distinctive architectural style; or
- D. Embodies distinguishing characteristics of an architectural style or engineering specimen; or
- E. Is the work of a designer, architect, landscape architect or designer, or engineer whose work has significantly influenced the historical, architectural, economic, social, or cultural development of the City, Commonwealth or Nation; or
- F. Contains elements of design, detail, materials or craftsmanship which represent a significant innovation; or
- G. Is part of or related to a square, park or other distinctive area which should be preserved according to an historic, cultural or architectural motif; or
- H. Owing to its unique location or singular physical characteristic, represents an established and familiar visual feature of the neighborhood, community or City; or
- I. Has yielded, or may be likely to yield information important in pre-history or history; or
- J. Exemplifies the cultural, political, economic, social or historical heritage of the community.



Lutheran Church of the Incarnation
4633 Cedar Ave

Undesignated



Calvary Methodist Episcopal Church
4740 Baltimore Ave



Undesignated



Saint Francis de Sales Church & School
917 S 47th St & 4615-25 Springfield Ave

Undesignated



Saint Francis de Sales Convent & Rectory
912-14 S 47th St & 4615-25 Springfield Ave

Undesignated



Saint Paul Presbyterian Church
5001 Baltimore Ave

Undesignated



Belmont Trust Company
4824-26 Baltimore Ave

Undesignated



Engine 68 Fire Co.
701 S 50th St



Whitmer Residence
4701-15 Kingessing Ave

Undesignated



4823 Regent St

Undesignated



The Montrose
4629-31 Baltimore Ave

Undesignated



University House
801 S 47th St

Undesignated



The Castle
901-03 S 48th St

Undesignated



Chester Lynne
4619-21 Chester Ave



Chester Plaza
4605-11 Chester Ave

Undesignated



Garden Court National Register Historic District

Undesignated



500 block of S 46th St

Undesignated



1000 block of Farragut Terrace

Undesignated



Residential

Undesignated

Nomination and Report Library

Home / What We Do / Nomination and Report Library

- ▶ Architecture Walking Tours
- ▶ Our Advocacy
- ▶ Homeowner Workshops
- ▶ Easements
- ▶ Extant Magazine
- ▶ Young Friends of the Preservation Alliance
- ▶ Nomination and Report Library
- ▶ Preservation Plan for Philadelphia
- ▶ Midcentury Modern Initiative
- ▶ African American Heritage
- ▶ Historic Religious Properties



Preservation Alliance Publications

- How to Look at Your Neighborhood: A Guide for Community Organizations
- Illustrated Survey Manual and Guide to Architectural Styles
- How to Navigate the Historical Review Process in Philadelphia
- How to Nominate an Individual Building, Structure, Site or Object to the Philadelphia Register of Historic Places
- Sense of Place: Design Guidelines for New Construction in Historic Districts

Sample Philadelphia Register of Historic Places Nominations

Window Snap

Individual Nominations

- 1501-05 Fairmount Avenue
- Chinese Cultural and Community Center

Patrick Grossi, Director of Advocacy
Caroline Slama, Project Manager

Preservation Alliance for Greater Philadelphia
1608 Walnut St, Suite 804
Philadelphia, PA 19103
cslama@preservationalliance.com

Facebook facebook.com/preservationalliance/
Twitter @PreservationPHL
Instagram @PresAlliancePHL

